



MESSAGE FROM HELEN

I hope you all had a very happy and restful Spring break and enjoyed spending time with friends and family. We are all looking forward to some warmer weather and sunshine in the next few weeks so that we can get outside in the sunshine!

It is a very busy term coming up with several bank holiday weekends in May. The term dates are on the school website and this term's diary dates are all in the newsletter on page 4—please do check them carefully and make a note of those that involve you or your children. It is especially important to remember when we break up for half term and the summer as I am not able to authorise any holidays during term time. Attendance at Rhyl continues to be a very big priority and we need every child coming to school every day.

Many families will be celebrating Eid at the end of this week and I would like to wish you every happiness and joy for a peaceful time. If Eid does fall on Friday 21 April as expected, this is authorised absence for those children celebrating this important festival. In school we will be having some additional Eid Celebrations with **Eid parties in school on Tuesday 25th April** and an after school **Eid Fair on Thursday 4th May**. Emails and texts to follow with information.

Friday assemblies take place for the whole school each week at 2.45pm and you are welcome to join by zoom on the week your child's class is presenting—the office sends out a link to parents each Friday.

Family Learning

Our Family learning is back up and running this term with even more sessions for you to join. The timetable is in the weekly newsletter, on the website and on the noticeboards so please do come along and get involved. If there is anything particular you would like, please let the office or Zara know and we will do our

best!

I hope you have a good week, with best wishes

Helen



*Wishing you all a very
happy and peaceful Eid*

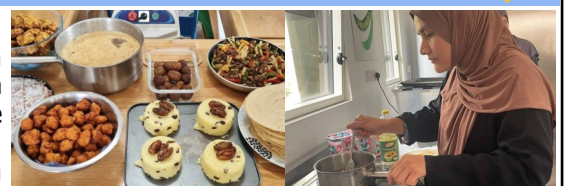


Blue Sky News



Wellbeing Group Cook a Special Menu

Just before the holidays, the Wellbeing Group spent an afternoon cooking in Rhyl Kitchen Classroom. More information is given on page 3. Would you like to use the kitchen too? The community kitchen is free to use for our parents and carers. You will need reserve a time in advance as the kitchen is often busy with cookery lessons for the children. To find out more and book a slot, email Tom at tom@rhylprim.camden.sch.uk.



To stay up to date with events and exciting learning at Rhyl, follow us on
Instagram and Twitter @rhylprimary



HAPPY BIRTHDAY MESSAGES

This week we would like to wish a Very Happy Birthday to:

Sam in Birch class who is 8 years old today
 Maryam in Bonsai class who will be 6 years old on Thursday 20 April
 Samantha in Acacia class who will be 8 years old on Thursday 20 April
 Ihsan R in Birch class who will be 8 years old on Thursday 20 April
 Mohamed in Maple class who will be 9 years old on Friday 21 April
 Iqra in oak class who will be 11 years old on Saturday 22 April
 Musa in Poppy class who will be 5 years old on Monday 24 April

Online Safety

KEEP CALM
AND
STAY SAFE
ONLINE

What would you do if this happened to you? Think about it and post your answer on google classroom.

You are sent lots of texts that say mean and hurtful comments like "You are ugly" "You have rubbish clothes", "U're stupid" and "no1likes u" Should you:

- Ignore them
- Delete them
- Report them and tell an adult

W₄ O₁ R₁ D₂
of the
W₄ E₁ E₁ K₅

This week many of our families will be celebrating Eid so our Word of the Week is:

Festivity

A festivity is the celebration of something in a joyful and exuberant way. How many festivals do you know of or possibly celebrate throughout the year?

School Meals

Please make a note that the cost of school meals will rise in April from £2.29 to **£2.52 per day**, so the weekly amount will be **£12.60**. School meals should be paid for a week in advance.



Literacy & Shakespeare Week

Next week, the children will be learning about the Elizabethan playwright Shakespeare as part of Literacy & Shakespeare Week. Each class have their own play to study in literacy throughout the week and in Guided Reading. Shakespeare was born in 1564 and wrote some of the greatest plays in the English language. Although he was from Stratford-upon-Avon he spent most of his life working in London.



Our Class H.E.R.O's are:
(Here, Everyday, Ready, On Time)

KS1 - Mahogany KS2 - Ash



WEEKLY PUNCTUALITY

Last week there were **43** children late for school.

At the end of last term, the whole school attendance for Years 1-6 was **92.70%**. Children should be in school for at least 95% of the time. Please support the school by bringing your child in and on time.

Year 1	Year 2		Year 3	Year 4	Year 5		Year 6
Bonsai 94.62%	Juniper 97.22%	Mahogany 97.78%	Acacia 89.62%	Lilac 91.54%	Ash 95.45%	Elm 86.67%	Oak 91.67%
Chestnut 92.80%	Sycamore 87.37%		Birch 93.08%	Maple 93.57%	Willow 94.35%		Sequoia 93.10%

CHILDREN'S CENTRE ~ COMMUNITY HUB ~ ADULT AND FAMILY LEARNING AT RHYL

What's on Week Beginning 24 April

Monday 24 April

Reception Phonics	9-9.30am	Grafton Road
Baby Play for under 1s	9.30-11.30am	Grafton Road
Adult IT Classes	9.30-11.30am	Grafton Road

Tuesday 25 April

Toddler Time for under 2s	9.30-11.30am	Grafton Road
Community Champions	9.15-11.30am	Grafton Road

Wednesday 26 April

Y1 Phonics	9-9.30am	Grafton Road
Sewing	9am-12pm	Grafton Road
Fun for All for under 5s	9.30-11.30am	Grafton Road
ESOL Class	9.30am-12pm	Grafton Road
Sewing	1-3pm	Grafton Road
Y2 Maths Workshop	9-9.30am	Rhyl Street
Mother & Daughter fitness	3.30-4.30pm	Rhyl Street

Thursday 27 April

A-Team Parent Group	9.15-10.30am	Grafton Road
ESOL Class	9.30am-12pm	Grafton Road
Arts & Crafts	1-3pm	Grafton Road
Baby Weighing	2-3.30pm	Grafton Road
Parent & Carer Wellbeing group	2-3pm	Rhyl Street

Friday 28 April

Little Talkers	9.30am-12pm	Grafton Road
Coffee with Jenny	9-10am	Rhyl Street

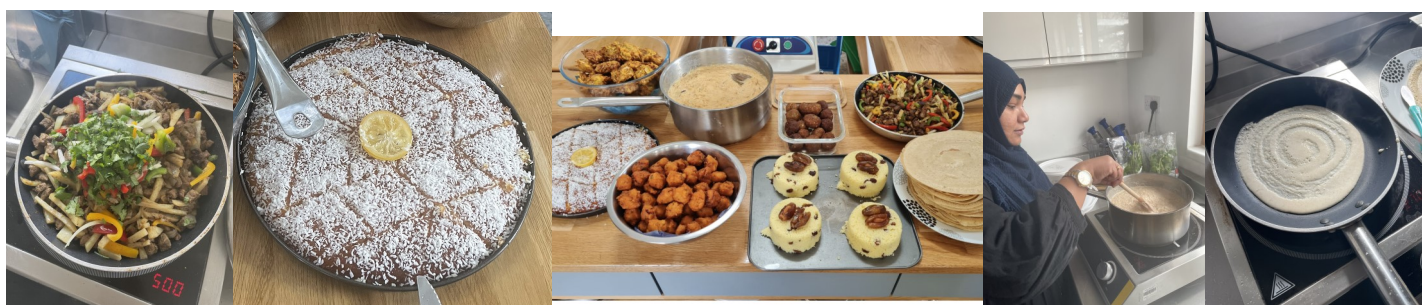
Coming Soon

Family Support Learning will return in the week starting 1 May 2023, with sessions to support children with maths, writing and spelling.

If you would like to learn more about being an inspirational volunteer, please join our Community Champions session on Tuesday 25 April.

Parent & Carer Wellbeing Group

The wellbeing group had a cooking master class with our brilliant mums who showed off their skills at the end of last term. Giving each other moral support and sharing tips and tricks, they not only got to taste each others foods when the fast was broken at 7.31pm but as always all seasoning was perfect. Even though these mums were fasting the skill of eyeball measurements was always 100%.



Dates for your diaries Summer Term 2023

24-28 April	Literacy and Shakespeare Week
25 April	Eid Parties in class
Friday 28 April	Year 4 Concert at 2pm
Thursday 4 May	Eid Fair after school at Rhyl Street
Friday 5 May	Coronation Party afternoon—everyone welcome
9-12 May	Year 6 SATs
Friday 19 May	Break a Sweat Day
22-26th May	Mental Health and Inclusion Week
Thursday 25 May	OPEN AFTERNOON—school closes at 1.40pm

29 May—5 June HALF TERM—children return on Tuesday 6 June

15 June	KS1 & KS2 Sports Day
Thursday 29 June	Summer Fair
Tuesday 11 July	EYFS Concert at 2.30pm
Wednesday 12 July	Year 2 Concert at 2pm
Thursday 13 July	Year 6 concert at 6pm
Monday 17 July	Music Concert at 2pm
Tuesday 18 July	Y6 Disco
Wednesday 19 July	Y6 Leavers Assembly at 9.30am
Friday 21 July	End of Term—school closes at 1.40pm



A Zoom link will be sent to parents and carers on Friday morning so they can attend their child's assembly remotely.

Trips this Term

27 April	Tulip class to Queen's Crescent Library
28 April	Poppy class to Queen's Crescent Library
2 May	Year 4 Litter Pick-nic at Primrose Hill
3 May	Year 3 to Queen Mary's Garden
16 May	Year 5 to the Natural History Museum
17 May	Year 1 to Golders Hill Park
18 May	Year 2 to Highgate Woods
22 May	Year 6 to trip to Southend
25 May	Year 2 to Queen's Crescent Library
26 May	Year 2 children to Queen's Crescent Library
8 June	Year 5 to Queen's Crescent Library
9 June	Year 6 to Queen's Crescent Library
13 June	Year 5 to Limehouse Basin
20 June	Year 4 to London Zoo
21 June	Year 1 Litter Pick-nic
21 June	Year 3 to London Zoo
22 June	Year 6 to London Zoo

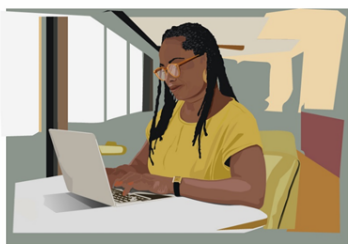
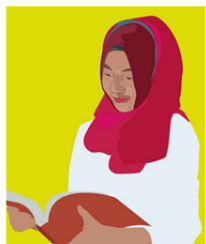


Class Assemblies—Friday at 2.45pm on Zoom

28 April	Y2 Mahogany & Y3 Birch
5 May	Y2 Juniper & Y6 Oak
12 May	Y2 Sycamore & Y4 Maple
19 May	YR Tulip & Y4 Lilac
26 May	YR Poppy & Y5 Ash
9 June	Y1 Bonsai & Y5 Elm
16 June	Y1 Chestnut & Y5 Willow
23 June	YN Sunflower & Y6 Sequoia
30 June	Y3 Acacia



School Forms & Online Payments



Monday 24 April 2023

9.15am-11.30am

Rhyl Community Primary School at
Grafton Road

Please speak to Zara Lee or the
school office on 020 785 1947 if you
would like to come.

Camden Adult Community Learning
www.webenrol.com/camden

SUPPORTED BY
MAYOR OF LONDON



Poem of the Week

Eid Mubarak! by Brenda Williams

The fasting time is over.
The day is getting late.
We are watching for the new moon
A sign to celebrate!

For now is Eid-ul-Fitr,
And we shall all have fun
With meeting friends and family
Now our festival's begun.

'Eid Mubarak!'
'Eid Mubarak!' we say
Our greeting to our folks and friends
On this our special day.



Thursday Kitchen at Rhyl

Tasty Thursdays runs every Thursday from 12-1pm and 6-7pm. Come and see us by the pizza oven and the hatch on Talacre Road. We are also selling other items such as cook books, flour, fruit and ice cream. Have a look on our website for the full list. (www.rhylkitchen.org). You can either place orders online or in person. We take cash or cards. All proceeds go towards running costs for the community kitchen.



MENU
Thursday 20 April
NOW RE-OPEN FOR LUNCH
12-1pm & 6-7pm
Wood Fired Pizza £5
(Special: Wild Garlic)
Sourdough Starter for Baking-FREE!
Dates £5
Apricots £5
@rhylkitchen
www.rhylkitchen.org

